

SUCCESS STORY

▶▶▶ IMPROVED RAILROAD CENTERLINE DATA FOR STATEWIDE USE

PROBLEM

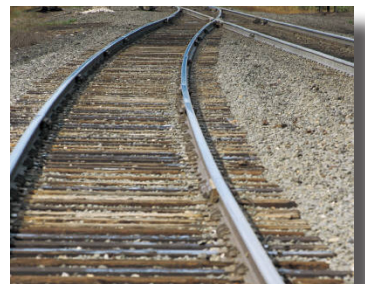
Officials at the State of North Dakota had multiple railroad centerline datasets that were incomplete, spatially inaccurate, and missing attributes such as names and ownership information. The poor quality of this data made unusable for important planning and analysis activities. Officials at the State of North Dakota looked to Applied Data Consultants, Inc. to help clean up and improve the railroad centerline dataset in an ongoing effort to improve the State's geospatial base data assets.

SOLUTION

Officials at the State of North Dakota had multiple railroad centerline datasets that were incomplete, spatially inaccurate, and missing attributes such as names and ownership information. The poor quality of this data made unusable for important planning and analysis activities. Officials at the State of North Dakota looked to Applied Data Consultants, Inc. to help clean up and improve the railroad centerline dataset in an ongoing effort to improve the State's geospatial base data assets.

RESULTS

The State of North Dakota now has a complete and spatially accurate railroad centerline dataset. They have since decided to have ADC further refine this data to ensure there is greater detail at intersections, railroad sidings and in urban areas where higher resolution imagery is available. This data is used for state web mapping applications, for planners and counties, and is accessed by the North Dakota National Guard.



“Applied Data Consultants have been great to work with. They are very responsive to our requests and they get things done when they say they will or sooner.”

Bob Nutsch
GIS Coordinator
State of North Dakota

